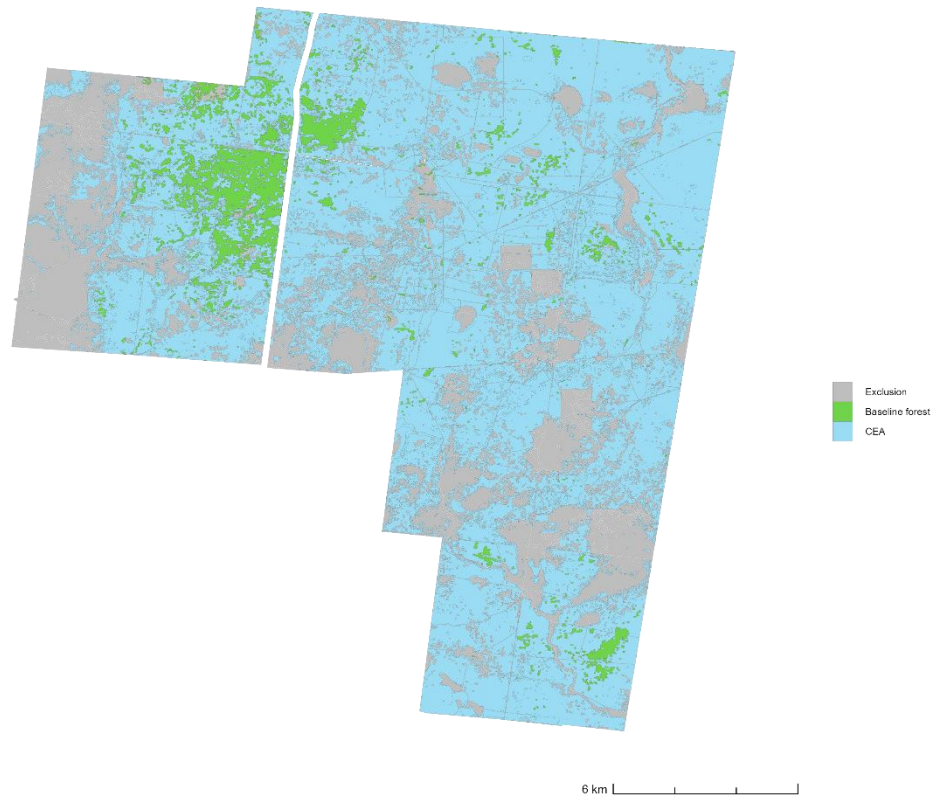
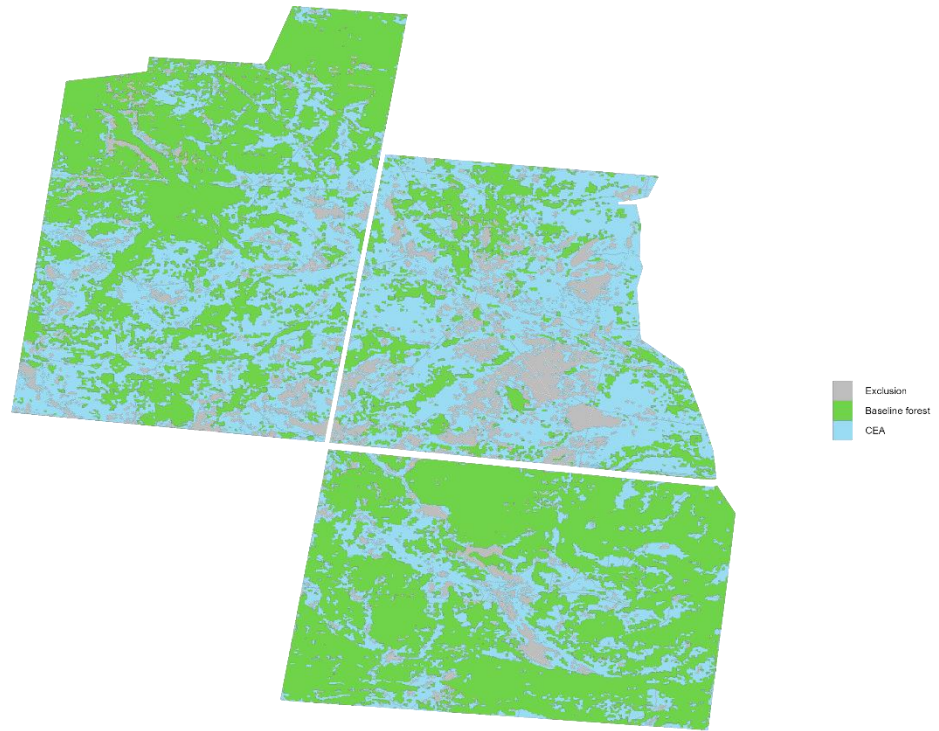


Voluntary CEA Data Release	
Project Name	Nulla Carbon
Project ID	ERF101849
Project Proponent	Ninal Ventures Pty Ltd and Lanin Holdings Pty Ltd.
Method	Carbon Credits (Carbon Farming Initiative) (Human-Induced Regeneration of a Permanent Even-Aged Native Forest - 1.1) Methodology Determination 2013 c1
Method URL	<a href="https://www.legislation.gov.au/Details/F2015C00576">https://www.legislation.gov.au/Details/F2015C00576</a>
Project Area	60,157 ha as of 6 April 2023
CEA area	37,316 ha as of 6 April 2023

## Voluntary CEA Data Release

CEA Map



Voluntary CEA Data Release	
Date Project Registered	15 September 2015
Start Project Crediting Period	1 January 2012 + later start of crediting for some CEAs (1/1/2016 - 29,269.6 ha)
Model Commencement Date (if applicable)	1 March 2010
Carbon abatement model (if applicable)	RMT
Key Modelling Parameters (if applicable)	Weed control at MCD: off Hectares modelled as fire disturbance: 953 Hectares modelled as clearing disturbance: 1,295
Data sources	<ul style="list-style-type: none"> <li>- CEA is defined through a project specific supervised classification process using the Random Forest algorithm and machine learning processes with both open-source and commercial GIS software (QGIS, ArcGIS, Manifold).</li> <li>- NCAS, Sentinel-2 mosaic/s, disturbances identified through sources such as SLATS, NAFI and manual exclusions, management history, stocking data, state cadastre, land titles</li> <li>- On-site waypoint collection</li> </ul>
Baseline scenario	<ul style="list-style-type: none"> <li>- Livestock</li> <li>- Feral animals</li> <li>- Mechanical or chemical destruction, or suppression, of regrowth</li> </ul>
Management changes associated with the carbon project	<ul style="list-style-type: none"> <li>- Management of the timing, and the extent, of grazing</li> <li>- Management, in a humane manner, of feral animals</li> <li>- Implementation of a decision to permanently cease the mechanical or chemical destruction, or suppression, of regrowth</li> </ul>