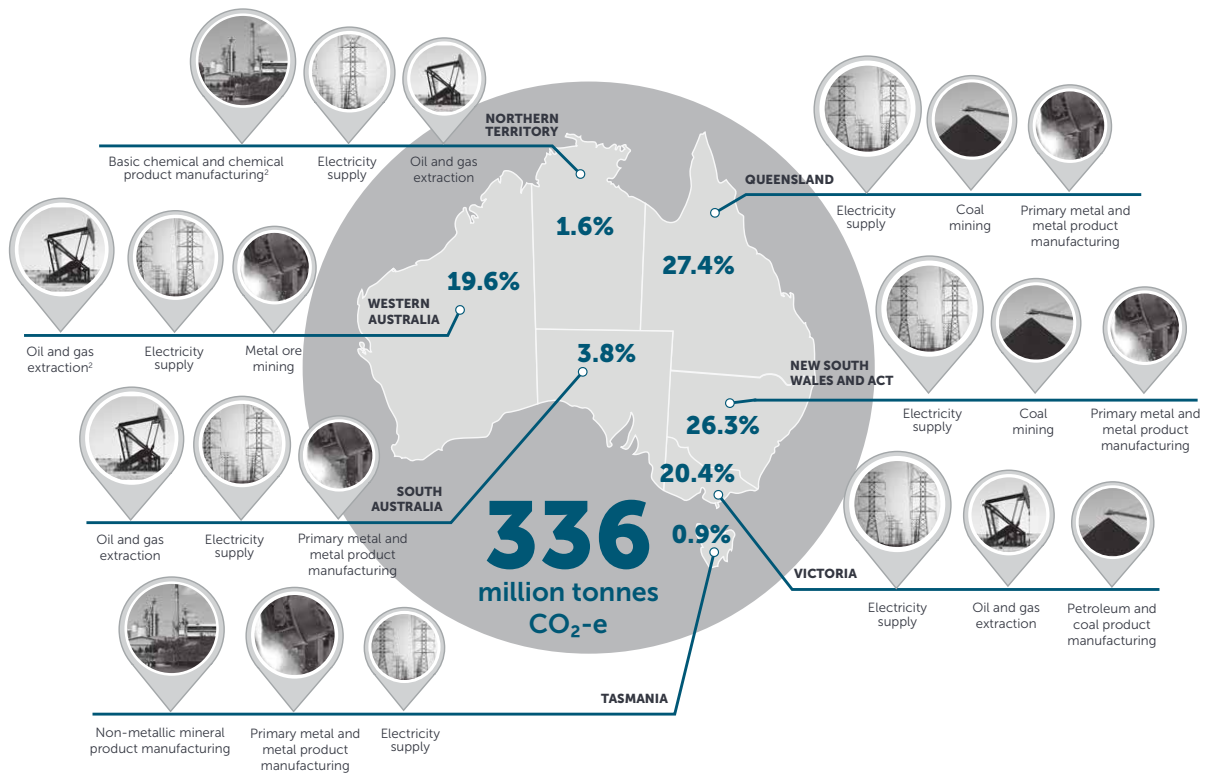




State and territory emissions profile 2016–17

Highest emitting industries by state and territory (scope 1)¹



The National Greenhouse and Energy Reporting scheme is a single national framework for corporations to report greenhouse gas emissions, energy consumption and production. This captures about 60 per cent of Australia's total emissions. Emissions from the agricultural, forestry, private vehicle transport and residential sectors are not collected under the National Greenhouse and Energy Reporting scheme and therefore not included in this data.

The state and territory emissions profile outlines details of the highest emitting industries for each state and territory in 2016–17.

Electricity remained the highest emitting industry in Queensland, Victoria, and New South Wales and ACT. Manufacturing remained the highest emitting industry in the Northern Territory and Tasmania. However, South Australia and Western Australia shifted from electricity to oil and gas extraction as the highest emitting industry for 2016–17.

¹ Industry categories correspond to the Australian and New Zealand Standard Industrial Classification (ANZSIC) subdivision level.

² This category includes emissions from LNG manufacturing, which are reported under multiple categories.