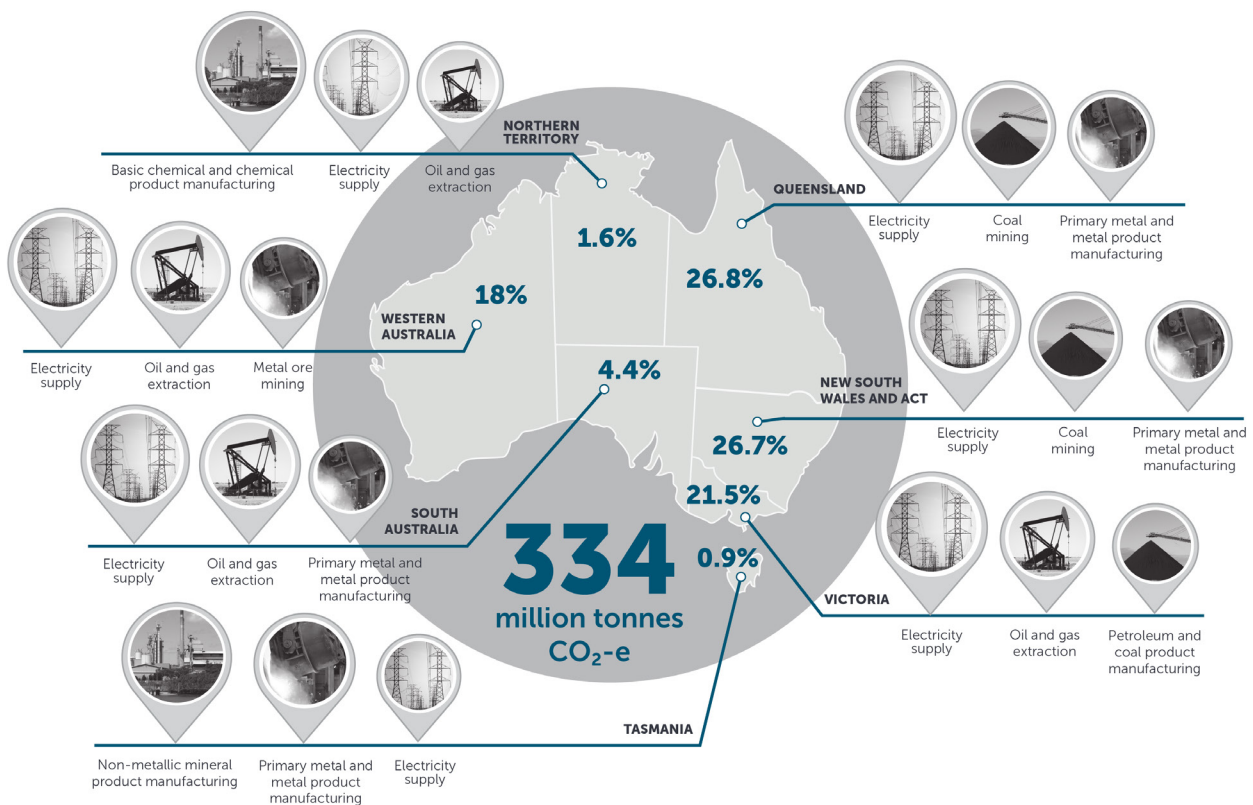




State and territory emissions profile 2015–16

Highest emitting industries by state



The National Greenhouse and Energy Reporting scheme is a single national framework for corporations to report greenhouse gas emissions, and energy consumption and production. This captures about 60 per cent of Australia’s total emissions and 80 per cent of energy consumed. Emissions from the agriculture, land use, land use change, forestry, private vehicle transport and residential sectors is not collected under the National Greenhouse and Energy Reporting scheme, and is therefore not included in this data.

The state and territory emissions profile outlines details of the highest emitting industries for each state and territory.

Electricity is the highest emitting industry in Queensland, New South Wales and ACT, Victoria, South Australia and Western Australia. Manufacturing is the highest emitting industry in Northern Territory and Tasmania in 2015–16.